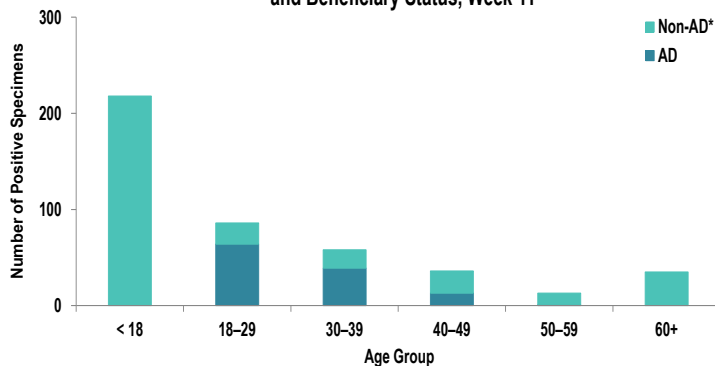


SUMMARY

Influenza activity in the Army population continues to decrease. In addition, respiratory syncytial virus (RSV) activity is also low. One influenza-associated hospitalization was reported during surveillance Week 11. Nationwide, influenza activity remains elevated, with 10.5% of specimens tested by clinical laboratories being positive for influenza A or B, according to the Centers for Disease Control and Prevention (CDC). Although influenza activity continues to decrease, avoid touching your eyes, nose, and mouth after coming in contact with public surfaces to help stop the spread of germs.

DEMOGRAPHICS

Positive Respiratory Specimen Results from Army MTFs by Age Group and Beneficiary Status, Week 11



AD: One hundred and seventeen positive respiratory specimens were collected from active duty (AD) service members (SMs) during Week 11; 54.7% (n=64) of the positive specimens were collected from SMs 18 – 29 years of age.

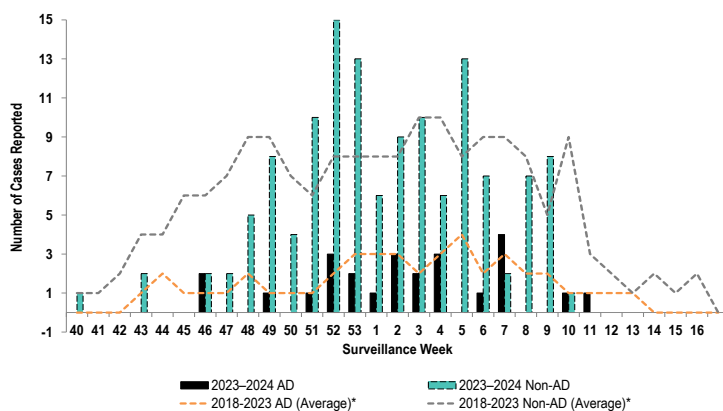
Non-AD: Three hundred and twenty-nine positive respiratory specimens were collected from non-AD individuals during Week 11; 66.3% (n=218) of the positive specimens were collected from individuals under 18 years of age and 6.7% (n=22) from individuals who are 18 – 29 years old.

*Non-AD=All individuals that are not active duty service members.

The age and beneficiary status of some cases were not available. Therefore, all calculations involving these variables were conducted using only available data. Differences in total results, and age- and beneficiary status-specific results may be noted throughout the report.

INFLUENZA-ASSOCIATED HOSPITALIZATIONS

Army Influenza-Associated Hospitalizations Reported in DRSi by Onset Week



One influenza-associated hospitalizations with an onset date in Week 11 were reported to the Disease Reporting System internet (DRSi). The season total thus far is 156 hospitalizations. The Week 11 average during the 2018 – 2023 seasons was 3 hospitalizations (with an average of 188 hospitalizations reported from the start of the season through Week 11).

The DRSi does not capture cases older than 65 years old for influenza-associated hospitalizations.

*Data from the 2020–2021 and 2021–2022 influenza seasons are not included in comparison calculations due to the unusually low incidence of influenza.

Data are preliminary and subject to change.

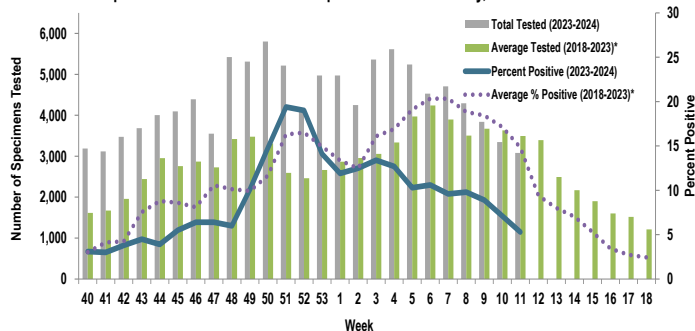
Disclaimer: The mention of any non-federal entity and/or its products is for informational purposes only, and not to be construed or interpreted, in any manner, as federal endorsement of that non-federal entity or its products.

Questions?
Email DCPH-A-DEP

INFLUENZA A ACTIVITY - ARMY

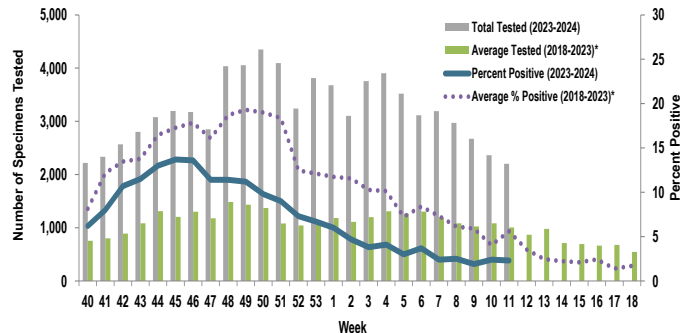
RSV ACTIVITY - ARMY

Proportion of Positive Influenza A Specimens for U.S. Army, 2023-2024



Of the 3,080 specimens tested for influenza A during Week 11, 5.3% (n=162) were positive. Influenza A activity decreased by 1.8%.

Proportion of Positive RSV Specimens for U.S. Army, 2023-2024



Of the 2,202 specimens tested for RSV during Week 11, 2.3% (n=51) were positive. RSV activity remained unchanged since Week 10.

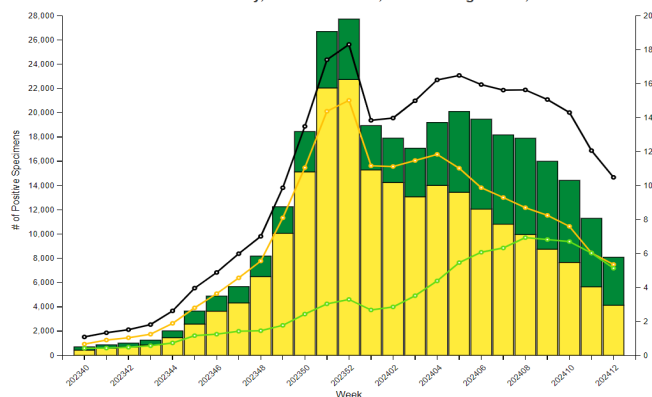
*Data from the 2020–2021 and 2021–2022 influenza seasons are not included in comparison calculations due to the unusually low incidence of influenza.

	Week 8	Week 9	Week 10	Week 11	Season Total	
Army MTF Laboratory Results, 2023-24	Adenovirus	12	14	15	24	329
	Enterovirus	39	48	30	50	1,116
	Influenza A	419	342	239	162	10,787
	Influenza B	271	244	190	136	4,614
	Parainfluenza	16	22	32	23	339
	RSV	74	52	56	51	5,913
	Negative	3,520	3,179	2,856	2,723	88,005
	Total	4,351	3,901	3,418	3,169	111,103

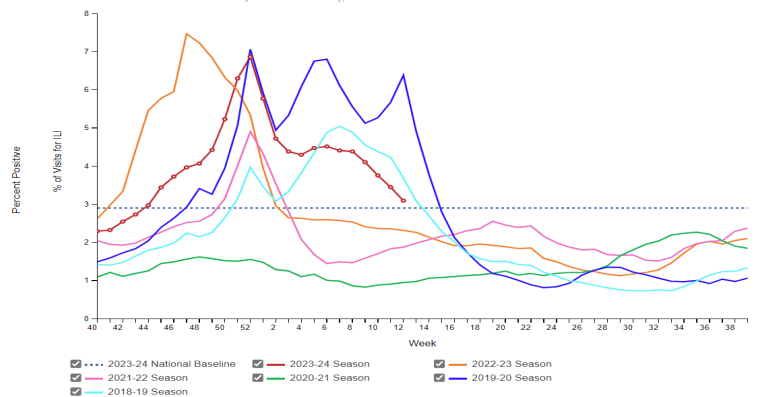
Of the 3,169 specimens tested during Week 11, 14.1% (n=446) were positive for any type of respiratory illness. Influenza A accounted for 36.3% (n=162) of the positive results, influenza B accounted for 30.5% (n=136), RSV accounted for 11.4% (n=51), enterovirus accounted for 11.2% (n=50), adenovirus accounted for 5.4% (n=24) and parainfluenza accounted for 5.2% (n=23). Additionally, the reported number of specimens tested decreased 7.3% from Week 10 to Week 11. Significantly more tests for influenza have been conducted this season compared to past seasons; 109,586 specimens have been tested for influenza A so far this season compared to the average of 75,536 specimens during the same time period in 2018-2023*.

INFLUENZA-LIKE ILLNESS (ILI) ACTIVITY - UNITED STATES

Influenza Positive Tests Reported to CDC by Clinical Laboratories, National Summary, 2023-24 Season, week ending Mar 23, 2024



Percentage of Outpatient Visits for Respiratory Illness Reported by The U.S. Outpatient Influenza-like Illness Surveillance Network (ILINet), Weekly National Summary, 2023-24 Season and Selected Previous Seasons

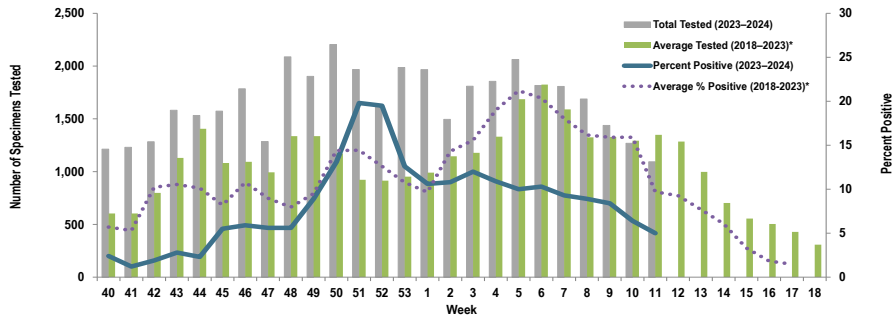


Nationwide in Week 11 (CDC's Week 12), incident ILI activity was 3.1%; this is above the national baseline of 2.9%. Additionally, a total of 77,183 specimens were tested for influenza by select clinical laboratories and submitted to the CDC; 8,088 (10.5%) were positive. Influenza A accounted for 51.1% (n=4,130) of the total positive specimens.

Locations providing Week 11 laboratory data as of 27 March 2024: Camp Zama, Carlisle Barracks, Ft. Belvoir, Ft. Bliss, Ft. Campbell, Ft. Cavazos, Ft. Carson, Ft. Drum, Ft. Eisenhower, Ft. Eustis, Ft. Gregg-Adams, Ft. Huachuca, Ft. Irwin, Ft. Jackson, Ft. Johnson, Ft. Knox, Ft. Leavenworth, Ft. Leonard Wood, Ft. Lewis, Ft. Liberty, Ft. Meade, Ft. Moore, Ft. Novosel, Ft. Riley, Ft. Sam Houston, Ft. Sill, Ft. Stewart, Ft. Wainwright, Korea, Landstuhl Regional Medical Center, Redstone Arsenal, Tripler Army Medical Center, the U.S. Military Academy at West Point, and Walter Reed National Military Medical Center.

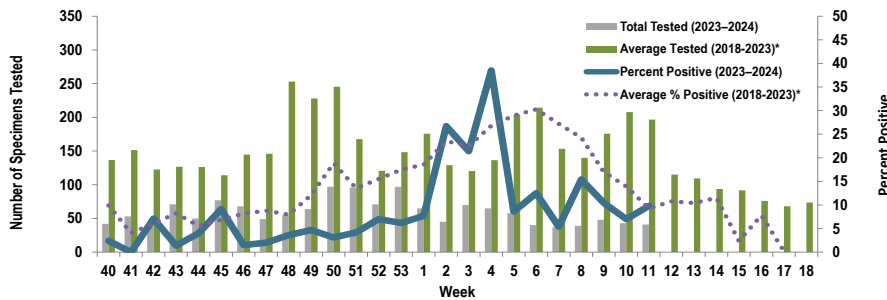
Proportion of Influenza A Positive Specimens by Week and Medical Readiness Command, 2023–2024 as Compared to 2018–2023*

Medical Readiness Command - East



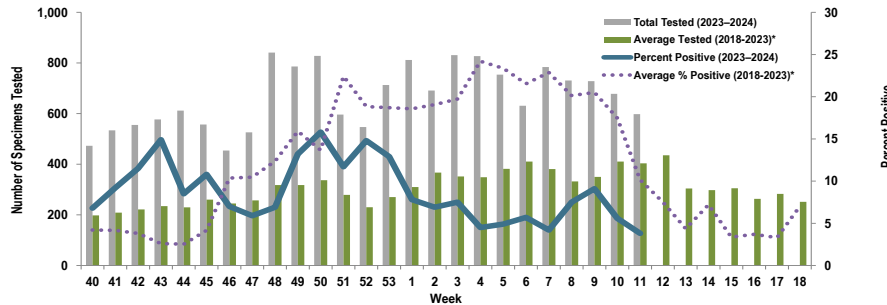
Week 11			
Age Group	AD	Non-AD	Season Total
< 18	0	16	1,261
18–29	13	5	833
30–39	5	1	588
40–49	2	4	390
50–59	0	1	298
60+	0	8	333
Total	20	35	3,703

Medical Readiness Command - Europe (Landstuhl Regional Medical Center)



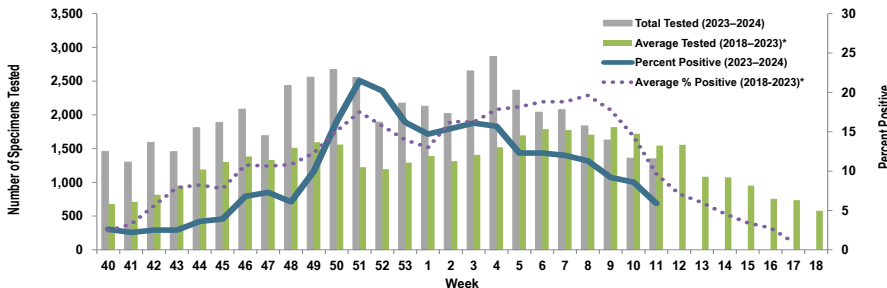
Week 11			
Age Group	AD	Non-AD	Season Total
< 18	0	0	45
18–29	0	0	24
30–39	1	1	24
40–49	0	0	17
50–59	0	1	10
60+	0	1	6
Total	1	3	126

Medical Readiness Command - Pacific



Week 11			
Age Group	AD	Non-AD	Season Total
< 18	0	9	379
18–29	5	2	513
30–39	2	0	265
40–49	0	0	107
50–59	0	1	61
60+	0	4	114
Total	7	16	1,439

Medical Readiness Command - West



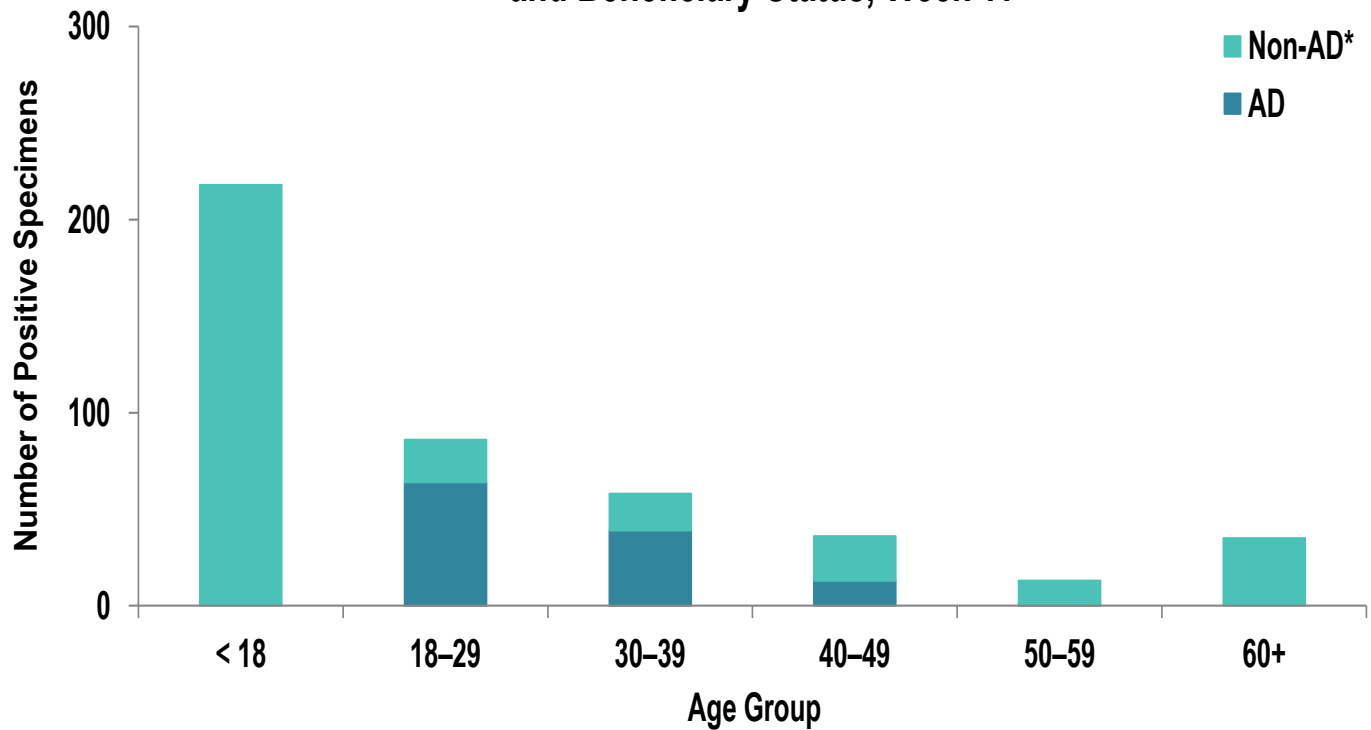
Week 11			
Age Group	AD	Non-AD	Season Total
< 18	0	25	1,908
18–29	17	7	1,418
30–39	11	3	883
40–49	3	6	500
50–59	1	4	373
60+	0	3	432
Total	32	48	5,514

*2018–2019, 2019–2020, and 2022–2023 influenza seasons. Data from the 2020–2021 and 2021–2022 influenza seasons are not included in comparison calculations due to the unusually low incidence of influenza.

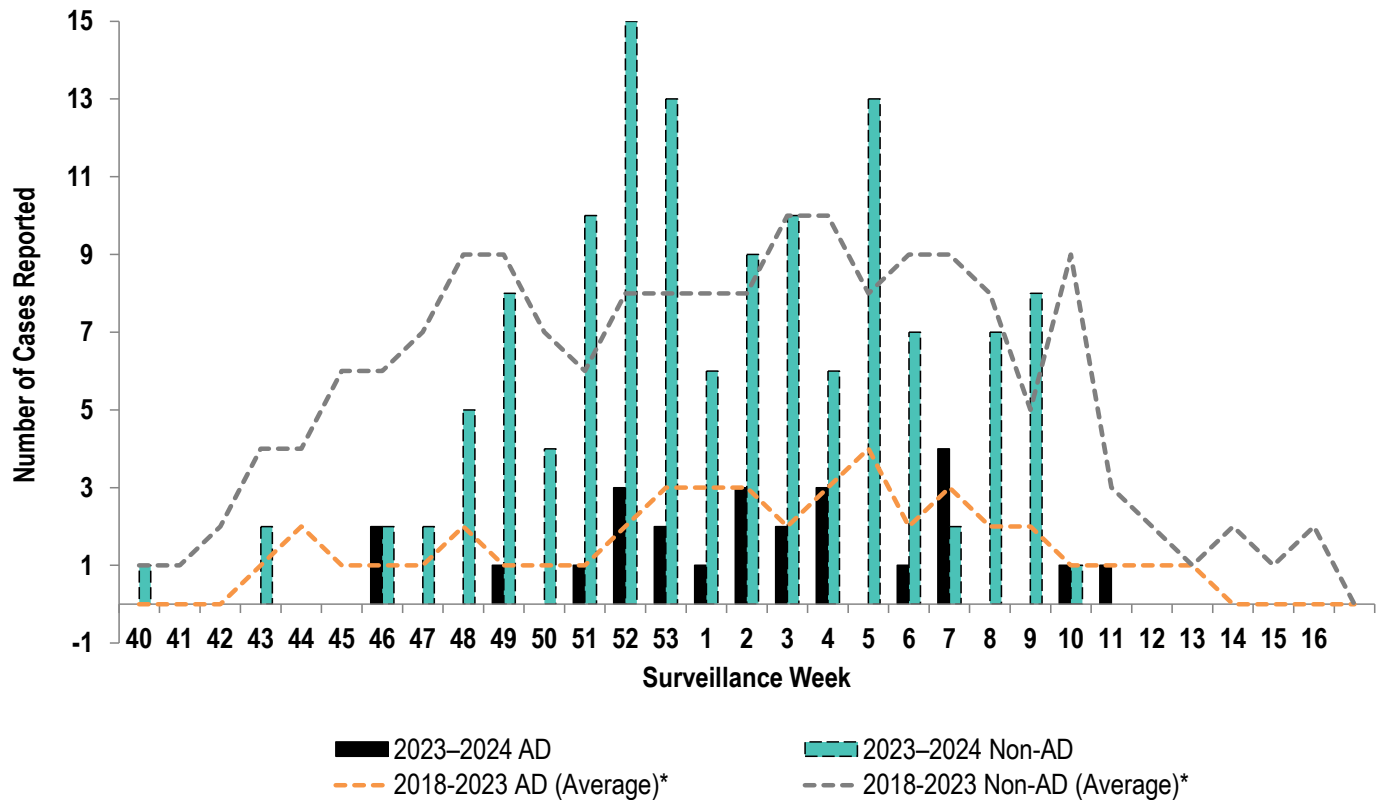
Number of Positive Influenza A Specimens by Region and Duty Status

Region	Week 8		Week 9		Week 10		Week 11	
	AD	Non-AD	AD	Non-AD	AD	Non-AD	AD	Non-AD
MRC-East	66	84	48	73	31	50	20	35
MRC-Europe	1	5	1	4	0	3	1	3
MRC-Pacific	33	22	37	29	18	20	7	16
MRC-West	79	129	58	92	32	85	32	48

Positive Respiratory Specimen Results from Army MTFs by Age Group and Beneficiary Status, Week 11

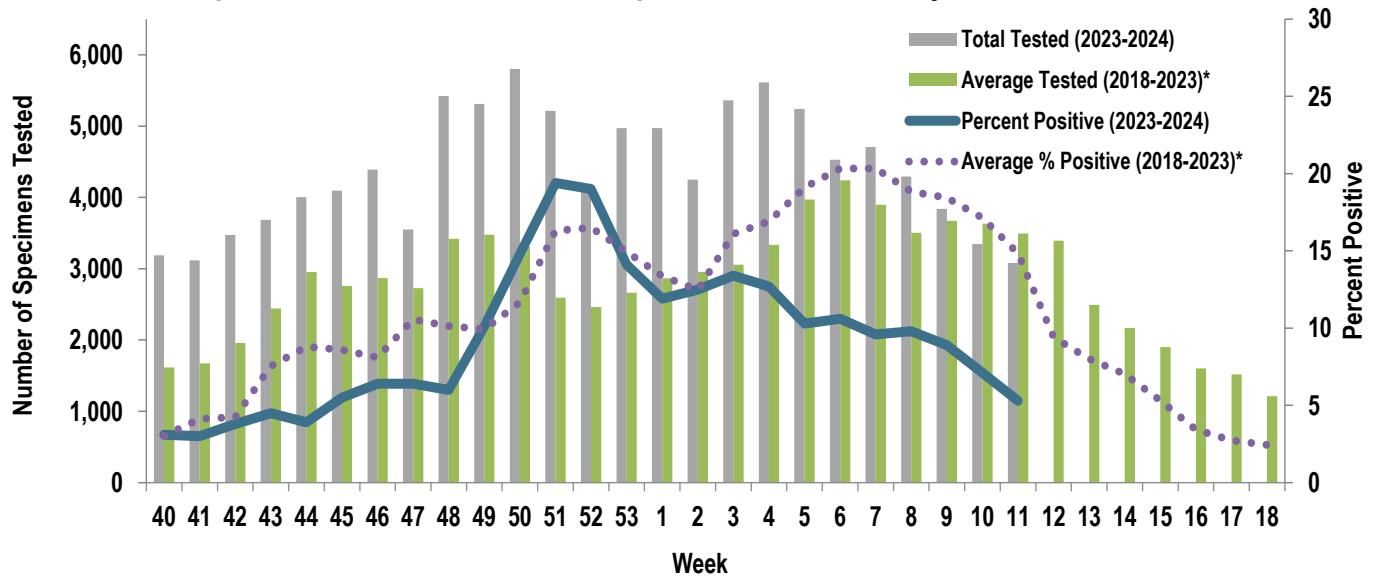


Army Influenza-Associated Hospitalizations Reported in DRSi by Onset Week



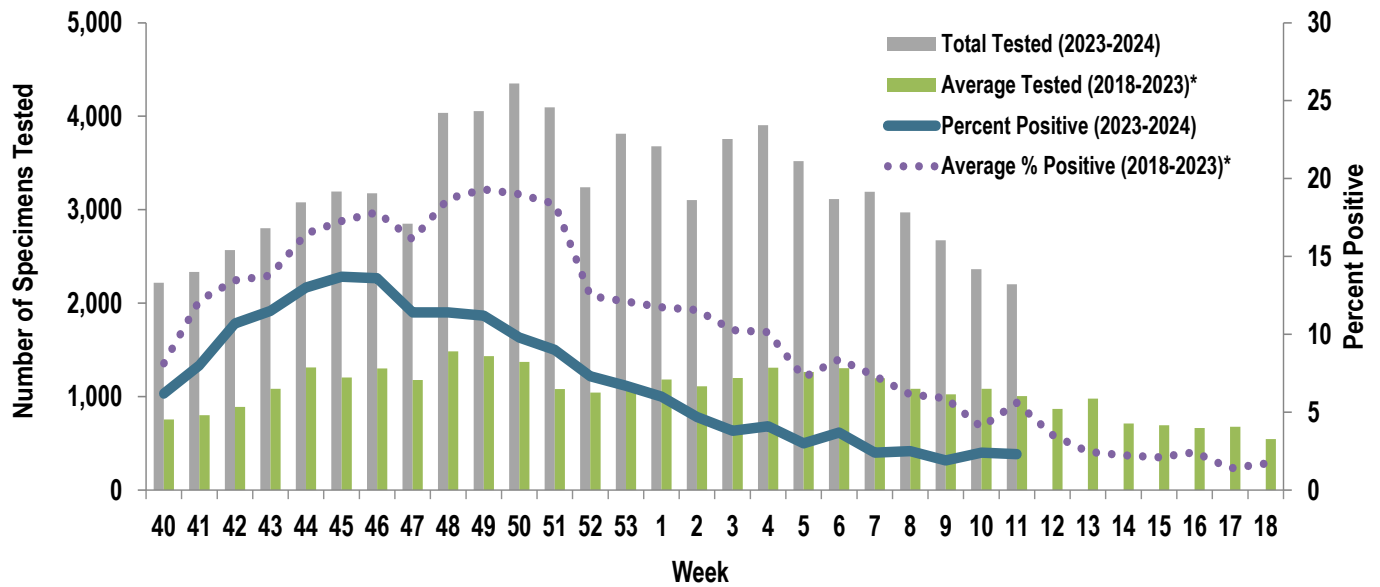
*2018-2019, 2019-2020, and 2022-2023 influenza seasons. Data from the 2020-2021 and 2021-2022 influenza seasons are not included in comparison calculations due to the unusually low incidence of influenza.

Proportion of Positive Influenza A Specimens for U.S. Army, 2023-2024



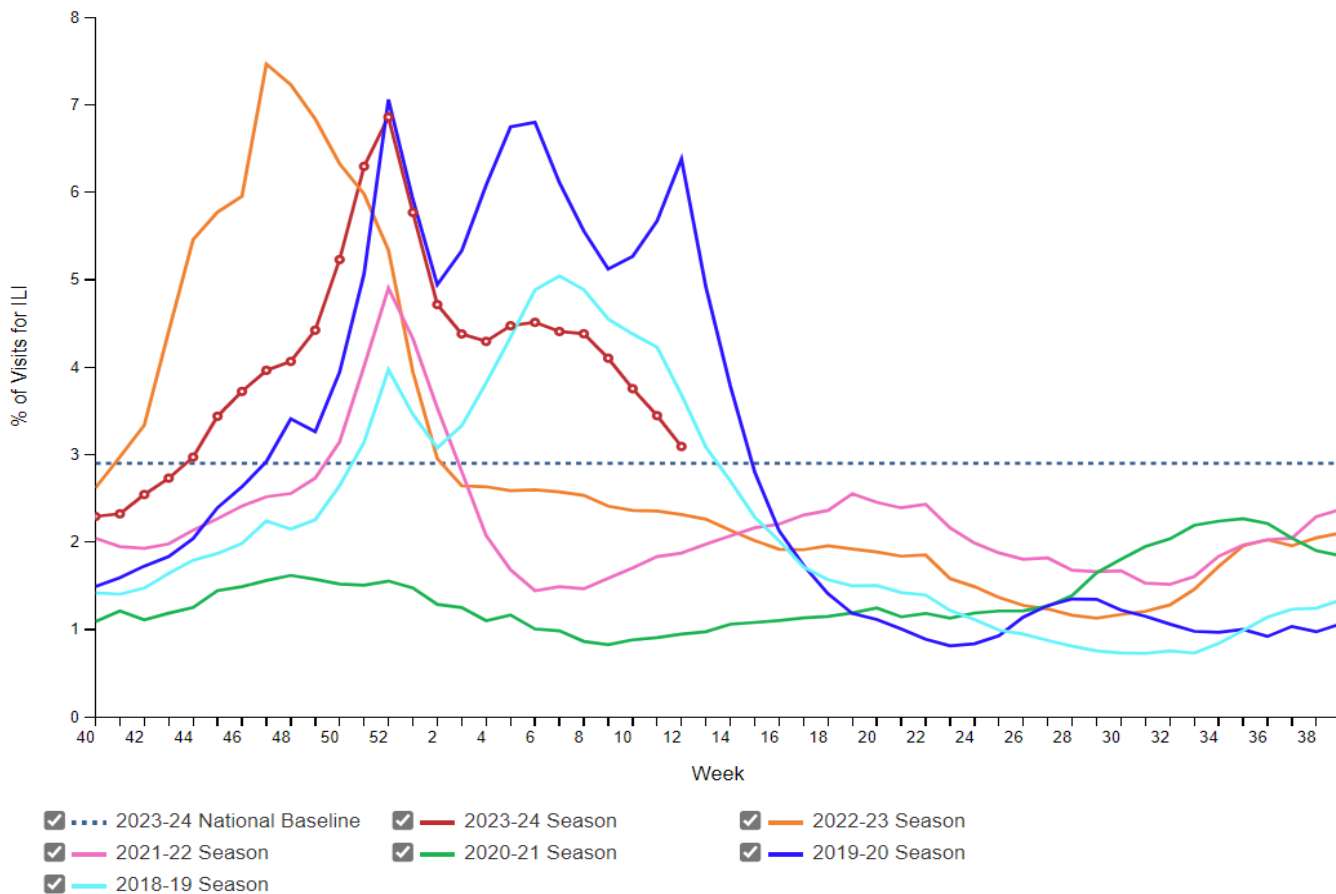
*2018–2019, 2019–2020, and 2022–2023 influenza seasons. Data from the 2020–2021 and 2021–2022 influenza seasons are not included in comparison calculations due to the unusually low incidence of influenza.

Proportion of Positive RSV Specimens for U.S. Army, 2023-2024



*2018–2019, 2019–2020, and 2022–2023 influenza seasons. Data from the 2020–2021 and 2021–2022 influenza seasons are not included in comparison calculations due to the unusually low incidence of influenza.

Percentage of Outpatient Visits for Respiratory Illness Reported by The U.S. Outpatient Influenza-like Illness Surveillance Network (ILINet), Weekly National Summary, 2023-24 Season and Selected Previous Seasons



Influenza Positive Tests Reported to CDC by Clinical Laboratories, National Summary, 2023-24 Season, week ending Mar 23, 2024

